

OFFICE SPACE
FOR LEASE

In The Heart of Maitland Commons
1009 Maitland Center Commons Blvd | Suite 209



LEASE PRICE
\$17.50 PSF MG

One of the most desirable office sites in Central Florida!

The Commons at Maitland Center is located off Maitland Boulevard on the corner of Westhall Lane and Maitland Center Commons Boulevard. Located adjacent to RDV Sportsplex in the heart of Maitland Center.

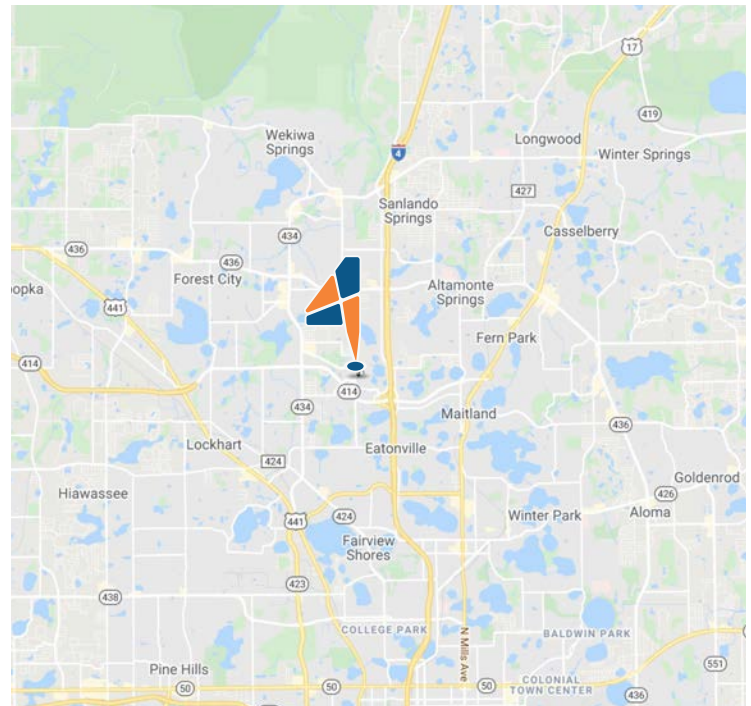
Property Details

Lease Rate:	\$17.50 PSF Modified Gross
1st Floor Suite 210:	±2,876 SF
Building Size:	±13,203
Building Height:	1 Story
Additional Type:	Professional
Parking:	35 Surface Parking Spaces
Signage:	Building & Wayfinder

Property Highlights

- Extensive exterior renovation completed
- Brand new landscaping
- Close to local amenities - RDV, Chick-fil-A, Sam Snead's, & More
- Easy access to I-4
- Subway restaurant on site
- Premiere office market!

Location



PRESENTED BY

Solomon Attaway

SOLOMON@4ACRE.COM | 407.274.9142

Nicholas Fouraker CCIM

NICK@4ACRE.COM | 407.601.1466

**CALL
FOR MORE
INFORMATION**

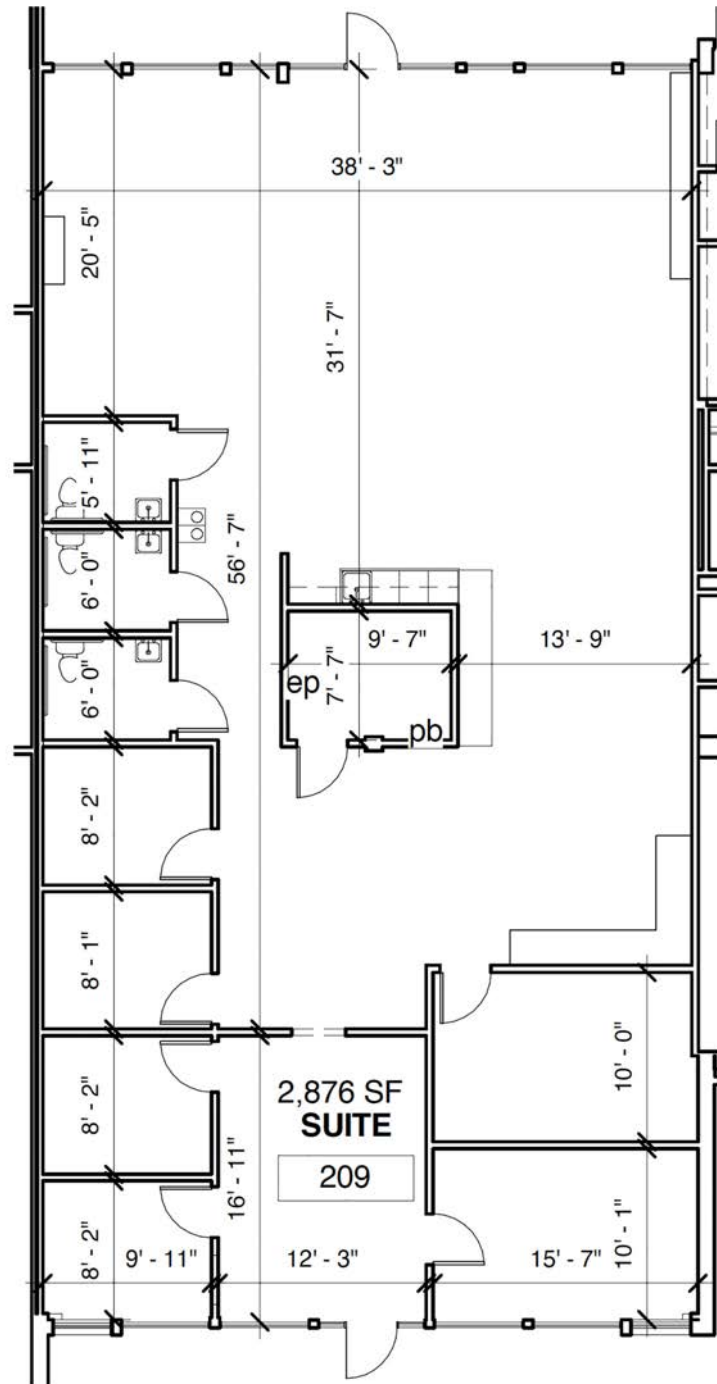
4 Acre Commercial Real Estate (4 Acre) does not represent or warranty the accuracy of the information contained herein. Such information has been given to 4 Acre by the owner of the property or obtained from other sources deemed reliable. 4 Acre has no reason to doubt its accuracy, but does not guarantee it. The reviewer(s) of this document is encouraged to perform their own research for their own purposes to verify the dependability of the information being reviewed. All information should be verified by reviewer(s) prior to purchase or lease. Unless otherwise noted, the property is being offered as-is, where is, with all faults.

FLOOR PLAN

In The Heart of Maitland Commons
1009 Maitland Center Commons Blvd



Suite 209 - ±2,876 SF



PRESENTED BY

Solomon Attaway

SOLOMON@4ACRE.COM | 407.274.9142

Nicholas Fouraker CCIM

NICK@4ACRE.COM | 407.601.1466

CALL
FOR MORE
INFORMATION

PHOTOS

In The Heart of Maitland Commons
1009 Maitland Center Commons Blvd



Aerial - Suite 209 Location



Aerial - Suite 209 Location in 1009



PRESENTED BY

Solomon Attaway

SOLOMON@4ACRE.COM | 407.274.9142

Nicholas Fouraker CCIM

NICK@4ACRE.COM | 407.601.1466

CALL
FOR MORE
INFORMATION

4 Acre Commercial Real Estate (4 Acre) does not represent or warranty the accuracy of the information contained herein. Such information has been given to 4 Acre by the owner of the property or obtained from other sources deemed reliable. 4 Acre has no reason to doubt its accuracy, but does not guarantee it. The reviewer(s) of this document is encouraged to perform their own research to verify the dependability of the information being reviewed. All information should be verified by reviewer(s) prior to purchase or lease. Unless otherwise noted, the property is being offered as-is, where is, with all faults.

AERIALS

In The Heart of Maitland Commons
1009 Maitland Center Commons Blvd



Aerial - Suite 209 Location



Aerial - Suite 209 Location in 1009



PRESENTED BY

Solomon Attaway

SOLOMON@4ACRE.COM | 407.274.9142

Nicholas Fouraker CCIM

NICK@4ACRE.COM | 407.601.1466

CALL
FOR MORE
INFORMATION

4 Acre Commercial Real Estate (4 Acre) does not represent or warranty the accuracy of the information contained herein. Such information has been given to 4 Acre by the owner of the property or obtained from other sources deemed reliable. 4 Acre has no reason to doubt its accuracy, but does not guarantee it. The reviewer(s) of this document is encouraged to perform their own research for their own purposes to verify the dependability of the information being reviewed. All information should be verified by reviewer(s) prior to purchase or lease. Unless otherwise noted, the property is being offered as-is, where is, with all faults.

AERIAL
MAP

In The Heart of Maitland Commons
1009 Maitland Center Commons Blvd



Points of Interest



PRESENTED BY

Solomon Attaway

SOLOMON@4ACRE.COM | 407.274.9142

Nicholas Fouraker CCIM

NICK@4ACRE.COM | 407.601.1466

CALL
FOR MORE
INFORMATION

4 Acre Commercial Real Estate (4 Acre) does not represent or warranty the accuracy of the information contained herein. Such information has been given to 4 Acre by the owner of the property or obtained from other sources deemed reliable. 4 Acre has no reason to doubt its accuracy, but does not guarantee it. The reviewer(s) of this document is encouraged to perform their own research to verify the dependability of the information being reviewed. All information should be verified by reviewer(s) prior to purchase or lease. Unless otherwise noted, the property is being offered as-is, where is, with all faults.